



Mouse anti Plasma Cell Marker Monoclonal Antibody

Alternative Name(s):

Plasma B cell, Plasmocytes

Order Information

- **Description:** Plasma Cell Marker
- **Catalogue:** 606-180
- **Lot:** See label
- **Size:** 100ug/200ul
- **Host:** Mouse
- **Clone:** LIV3G11
- **Application:** IHC(P)
- **Reactivity:** Hu

ANTIGEN PREPARATION

Enriched plasma B cells

BACKGROUND

This antibody stains an intra-cytoplasmic antigen which is present in normal and neoplastic plasma cells. LIV3G11 detects myeloma or plasmacytoma in bone marrow or other tissues. It differentiates lymphoplasmacytoid lymphoma from lymphocytic and follicular lymphoma.

PURIFICATION

The mouse IgG is purified by Protein A-Affinity Chromatography according to Isotyping

FORMULATION

This affinity purified antibody is supplied in sterile Phosphatebuffered saline (pH7.2) containing antibody stabilizer

SPECIFICITY

This antibody recognizes human Plasma Cell Marker protein. The other species are not tested.

STORAGE

The antibodies are stable for 24 months from date of receipt when stored at -20oC to -70oC. The antibodies can be stored at 2oC-8oC for three month without detectable loss of activity. Avoid repeated freezing-thawing cycles.

APPLICATIONS/SUGGESTED WORKING DILUTIONS*

- Western Blot: 0.1-1 µg/ml
- ELISA: 0.01-0.1 µg/ml
- Immunoprecipitation: 2-5 µg/ml
- IHC: 2-10 µg/ml
- Flow cytometry: Not tested
- Molecular Weight: nan
- Positive Control: Kidney Tissue
- Cellular Location: Cell Membrane

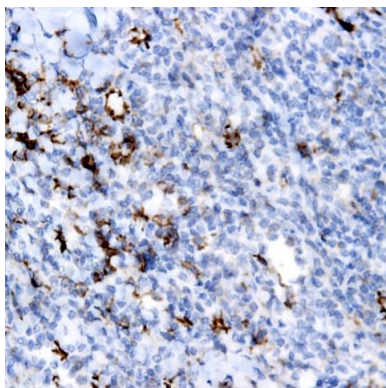
*Optimal dilutions should be determined by researchers for the specific applications.

FOR RESEARCH USE ONLY.

AbboMax, Inc 2528 Qume Drive, Suite 8, San Jose, California 95131, USA
1 408-573-1898 (Tel). 1 408-573-1858 (Fax). www.abbomax.com info@abbomax.com



DATA ATTACHMENTS



Immunohistochemistry: Human lymph node (FFPE) stained with Mouse anti- Pllasma Cell Marker (Cat# 606-180) at 1:200 for 10 min @ RT. Staining of formalin-fixed tissue requires boiling tissue sections in 10 mM Citrate Buffer, pH 6.0 for 10 min followed by cooling at RT for 20 min.

REFERENCES

FOR RESEARCH USE ONLY.

AbboMax, Inc 2528 Qume Drive, Suite 8, San Jose, California 95131, USA
1 408-573-1898 (Tel). 1 408-573-1858 (Fax). www.abbomax.com info@abbomax.com